

Boise Interagency Dispatch Pocket Card	
Responsible Agency: WFS (ID-BOD) USFS (ID-BOF) IDL (ID-SWS)	
Produced June 25 th , 2026	
Fire Danger Areas	SIG Wx Stations (2005-2024) Fire Weather Zones: ID400, 403, 420, 421, 423, 424 *Meet NWCG Standards
Boise FDRA	*Wagontown(102712), *Little Anderson(101710), *Bearskin Creek(101221)
Owyhee FDRA	*Pole Creek(103210), *Triangle(103208), *Brace Flat(103207)
Snake FDRA	*Deer Haven(102711), *Wagontown(102712), *Triangle(103208)

FIRE DANGER INTERPRETATION:

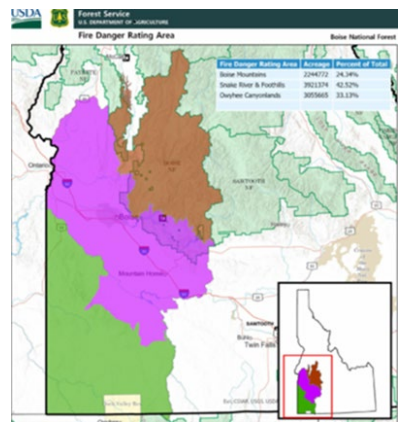
- Extreme** – Use Extreme Caution
- High** – Watch for Change
- Moderate** – Lower Potential, but always be aware

Remember what Fire Danger tells you:

- ✓ Energy Release Component gives seasonal trends calculated from temperature, humidity, daily temperature & rh ranges, and precip duration.
- ✓ Wind is NOT part of ERC calculation
- ✓ Watch local conditions and variations across the landscape – Fuel, Weather, Topography.
- ✓ Listen to weather forecasts – especially WIND

Past Experience:

- Microbursts are powerful downdrafts from thunderstorms which can seriously affect the spread rate, intensity, and direction from several miles away.
- Outflow winds during frontal passage will create erratic extreme fire behavior.
- Expect spotting in receptive fuels with spots establishing and spreading rapidly
- Many fires in the Boise Mountains exhibit significant fire growth and strong resistance to control following poor humidity recovery (<40%) and dry cold front passage.



Local Thresholds Watch Out:			
Combinations of any of these factors can greatly increase fire behavior:			
	Boise FDRA	Owyhee FDRA	Snake FDRA
20' Wind Speed	≥ 20 MPH	≥ 30 MPH	≥ 30 MPH
RH	≤ 20%	≤ 15%	≤ 15%
Temperature	≥ 80°	≥ 80°	≥ 85°
ERC	≥ 55	≥ 63	≥ 59